

# Soldrain ICD Channels

### Description:

As part of the Solco Internal Cavity Drainage Membrane System, channels are a crucial part of the overall system, and are laid at wall floor junctions to remove any water entering the structure.

These channels are designed with pre-determined water entry points into the rear of the channel.

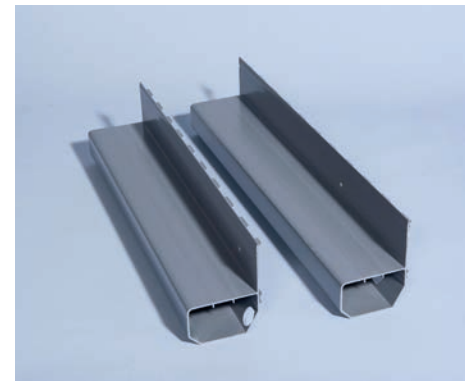
They either come with a flange upstand system or flangeless, depending on the type of foundation that you will be working with.

Channels come with various accessories to aid the system. ,



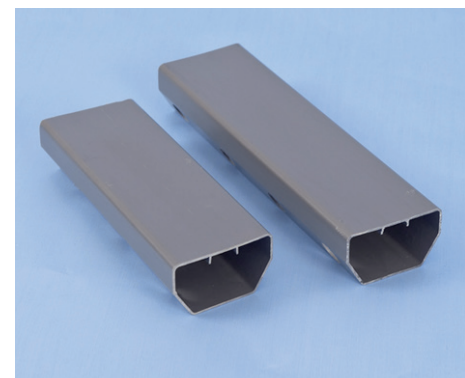
### Waterguard

Waterguard is a PVC drainage conduit designed for the control of water ingress in below ground situations. Wykamol Waterguard is fitted around the perimeter of the floor at the vulnerable wall/floor junction.



### Floor Drain

Floor Drain is a flangeless channel similar to Waterguard, for controlling water movement to a sump chamber or drain. It has the benefits of no upstand which is ideal where stepped foundation footings would cause a problem. The channel can also be used to drain across a floor centrally.

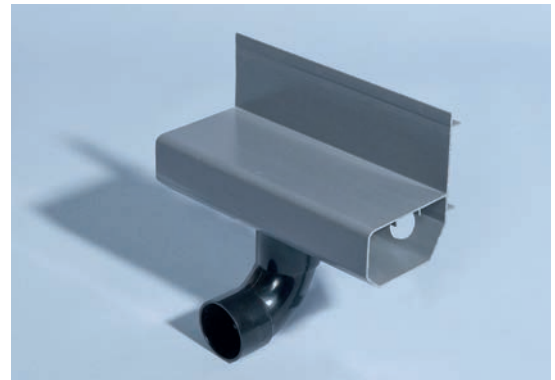


Solco, Unit 51, Portmanmoor Road Industrial Estate, Ocean Park, Cardiff, CF24 5HB

### Soldrain ICD Channeling Cont'd

#### Waterguard Drainage outlet

The drainage outlet can be used to get water from the channels to the sump chamber or existing drain. The angle bend on the underside of the channel takes water through a 32mm connection.



#### Universal Channel outlet

Newly designed channel outlet to remove water from the channel to the sump.

This has the benefit of a 100mm outlet for high water movement or for easier installation into the sump chamber.

It also comes with a jetting eye which can be cut down to suit floor finishes. Can be used with floor drain and waterguard channels.



#### Flexi Jetting Eye

The flexible jetting eye has been designed to allow cleaning of the channel system and also as an inspection port.

The unique flexible upstand jetting point can be easily bent to allow the channel to be used in a wall port system. It and also has the benefit of allowing slabs to be laid whilst still being easily accessible afterwards.



#### Waterguard Drain End Left or Right

The drain end connector can be used to take water away through an external wall to lower level drainage, ideal for houses built into a hill side where lower drainage is possible. This comes with either a left return or right return depending on where it is to be sited.

