

Solcourse Cavity Closer

Description:

The Solcourse Cavity Closer is designed to close off the cavity around window and door reveals without the need for a return block, preventing cold bridging and eliminating moisture, mould, and staining from around windows and doors. The 2.4m lengths are manufactured from a rigid PVCu profile that is insulated with extruded polystyrene. The Solcourse Cavity Closer is manufactured to the specific cavity size required and can be made to suit cavities from 50mm up to 300mm.

Cold Bridges:

Cold bridges are sections through the fabric of significantly lower thermal resistance than the rest of the construction. It is most commonly found around window and door openings and usually shows itself through so-called pattern staining. A cold bridge through an external frame attracts moisture in the form of surface condensation which attracts dirt and dust. This surface condensation can also lead to mould growth and damage to internal plaster and paintwork.

Solco Cavity Closers significantly reduce the risk of cold bridging around window and door openings when fitted in accordance with our recommendations.

Our cavity closers have been assessed using software that complies with the Standard for Thermal Bridge Calculations BS EN ISO 10211-2007. The conventions for calculations specified in the BRE document BR497 were also followed. The results are compared with the criteria set in the BRE Information Paper IP1/06 'Assessing the Effects of Thermal Bridging at Junctions and Around Openings' which is referenced in Building Regulations as shown below.

Detail	Default F-Value	F-Value with Solco Cavity Closer	Default Ψ -Value	Ψ -Value with Solco Cavity Closer
Jamb (100mm Cavity)	0.75	0.933	0.05	0.012
Sill (100mm Cavity)	0.75	0.950	0.04	0.009

Installation:

Solco Cavity Closers are easily installed.

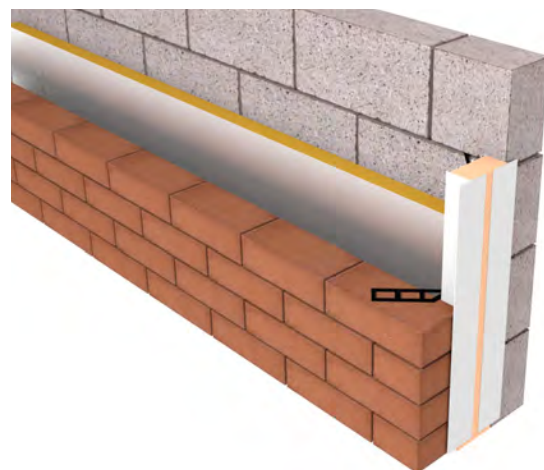
- Cut the jamb profile to the height of the window or door opening, adding 75mm to allow the bottom edges to drop into the cavity below the sill.
- Once the jamb sections are installed, measure the required width for the sill section and cut a length to butt tightly to the jamb sections. If a longer length than 2.4m is required, refer to a jointing method on the following page.

Option 1 (First Fix):

As above and build in the jamb sections as the brickwork progresses using Solco Brick Ties (1 no. every 225mm). Ties are not required on the sill section. Simply hold in place with an adhesive or nail to block.

Option 2 (Second Fix):

Cut sections to the required size as above and push-fit once the openings are formed. Sections can be secured by nailing to block or using a suitable adhesive.

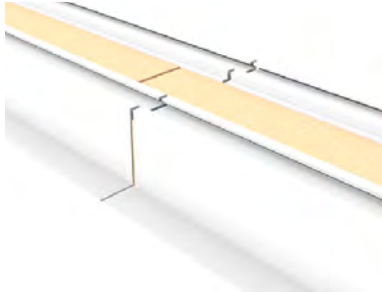


- Closes off cavities around window and door reveals.
- Available in cavity widths 50 to 300mm.
- Supplied in 2.4m lengths.
- Prevents cold bridging.
- Available single flange for check reveal details.
- Extruded polystyrene insulation.

Joining Method:

Where a longer length than the supplied 2.4m is required, the following joining method should be used:

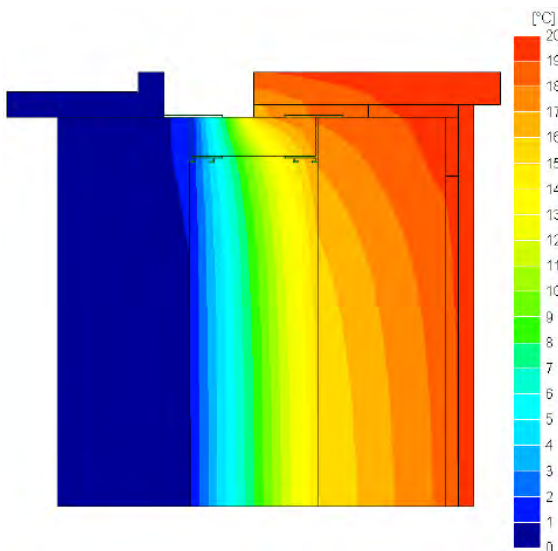
- Using an appropriate saw, remove 150mm of the plastic profile only, then push the exposed insulation into the next length of plastic profile.



Left: Brick Ties enable quick and easy installation as the brick and blockwork progresses.

Temperature Distribution:

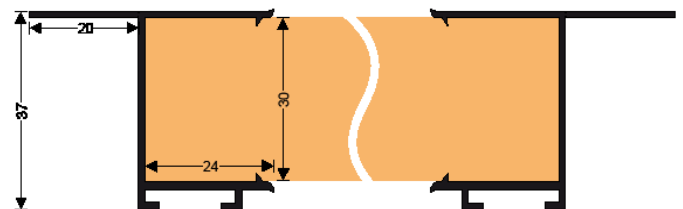
Below: Temperature Distribution illustrating heat loss at a window opening, where Solco Cavity Closer is fitted.



Technical Data:

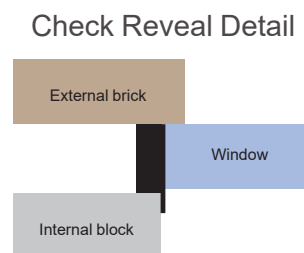
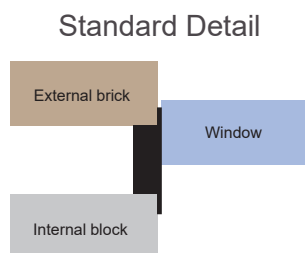
Property	Value
Typical Length	2.4m
Insulation	XPS (Extruded Polystyrene Insulation)
Thermal Conductivity	0.034 W/mK

Profile:



Check Reveal:

Solco Cavity Closers are available with a single flange to suit check reveal details where the window is set back behind the external brickwork.



Solco, Unit 51, Portmanmoor Road Industrial Estate, Ocean Park, Cardiff, CF24 5HB

Standards:

Solco Cavity Closers are insulated with extruded polystyrene which conforms to BS EN 13164:2008 Thermal Insulation Products for Buildings, Factory Made Products of Extruded Polystyrene Foam (XPS).

Environment:

- No CFCs or HCFCs are involved in the manufacturing process.
- The material presents no known threat to the environment and is classed as ODP and GWP zero.
- Solco Cavity Closers have a Green Guide rating of A+.

Storage and Packaging:

Solco Cavity Closers are supplied in branded polythene packs which offer protection during transport as well as providing ease of identification on-site.

Product Code	Suitable Cavity Width	Dimensions	Lengths per Pack
CC50	50mm	50 x 2400mm	8
CC65	65mm	65 x 2400mm	8
CC75	75mm	75 x 2400mm	8
CC85	85mm	85 x 2400mm	8
CC90	90mm	90 x 2400mm	8
CC95	95mm	95 x 2400mm	8
CC100	100mm	100 x 2400mm	8
CC110	110mm	110 x 2400mm	6
CC125	125mm	125 x 2400mm	6
CC135	135mm	135 x 2400mm	6
CC150	150mm	150 x 2400mm	6
CC180	180mm	180 x 2400mm	5
CC200	200mm	200 x 2400mm	5
CC225	225mm	225 x 2400mm	4
CC250	250mm	250 x 2400mm	4
CC275	275mm	275 x 2400mm	3
CC300	300mm	300 x 2400mm	3
CC50R - CC150R	50mm - 300mm	As above but single flange for check reveal	As Above