

# Solco Radon Gas Sump Unit

## Solco Radon Sump

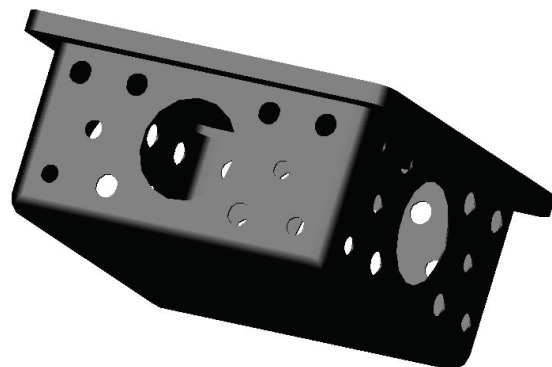
Used as part of the Solco Gas Protection System, they are required where sub-floor de-pressurisation is required under full protection.

- Lightweight - so very light & easy to manage on site
- Very simple to install on site with multiple outlets
- Offers full protection

## Application:

Solco Radon Sumps are prefabricated plastic units designed to act as a collection point for radon gas prior to it being ventilated away.

The sump is installed beneath the floor slab in non suspended floor applications and vented to atmosphere. Typically a 110mm venting pipe is connected to the sump, and passes through the external wall and brought out above ground level and is the connected to an external source and capped off with proprietary products i.e.. Solco Air Bricks & Solco Telescopic Under Floor Vents.



Product Details

Product Details	
Height	220mm
Widths	430mm
Length	430mm

## Installation:

- A pit should be excavated to ensure that for maximum de-pressurisation.
- The Radon sump is connected with a 110mm diameter PVC-U pipe to one outlet of the sump.
- Extend the pipe horizontally so that it passes through the external wall.
- Ensure that all joints and couplings are airtight.
- Back fill using a clean permeable material.
- Terminate the pipe just above ground level, and cap it.
- Connect to an external source and cap off with proprietary products.
- Provide a plate on the wall to indicate the presence of the radon exhaust pipe.
- Typically sumps are installed either at every 15m radius or 1 number unit per dwelling