

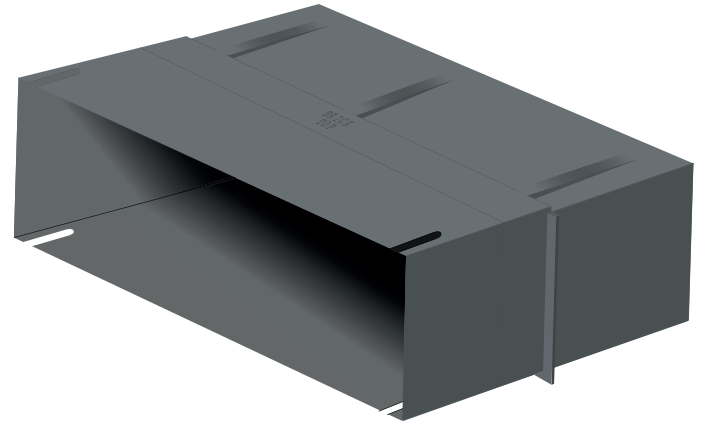
## Cavity Sleeve

### Description

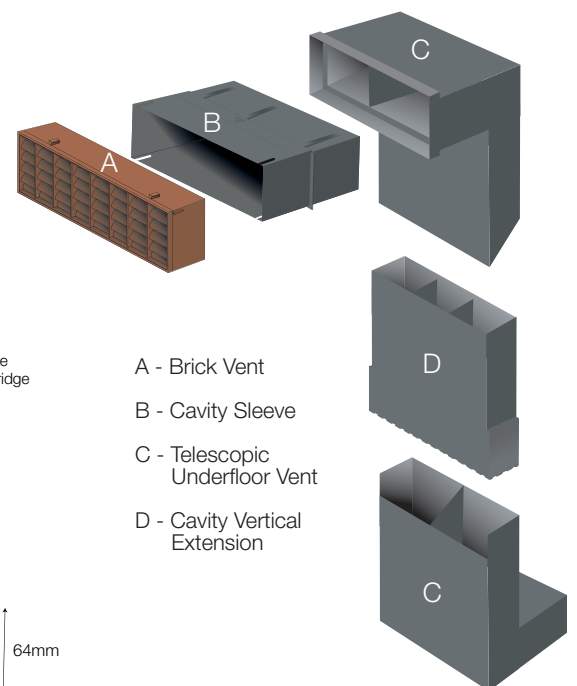
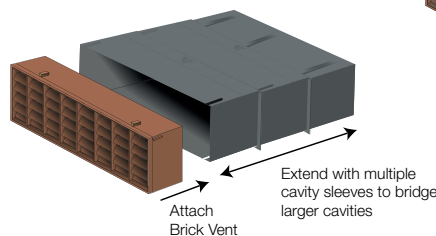
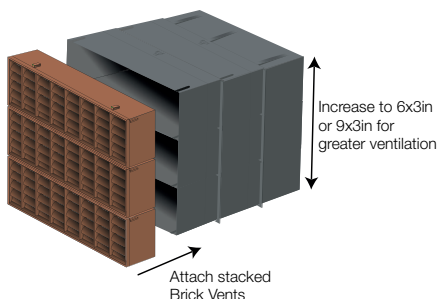
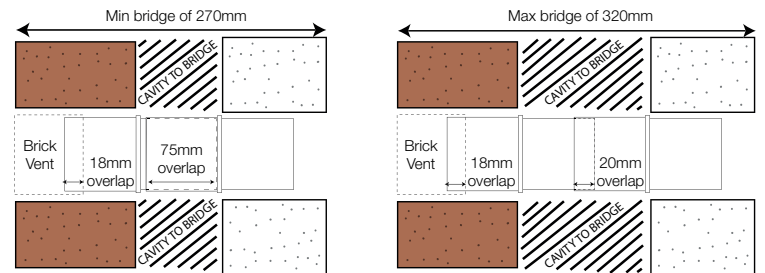
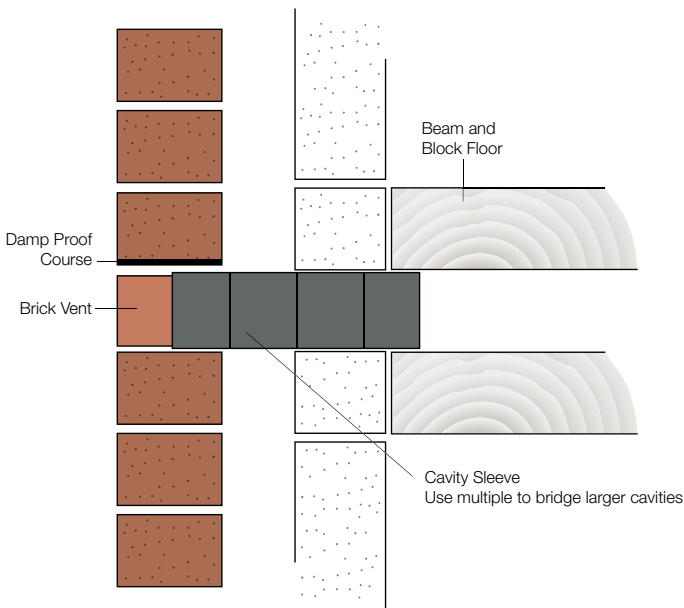
The Cavity Sleeve is designed to be used in conjunction with Brick Vent to ventilate building interiors through exterior walls. The design allows the units to be used together to form stacks of either 9" x 6" or 9" x 9" and are suitable for cavity widths from 50mm to 100mm. Further units can be used to bridge wider cavities.

### Installation

The Cavity Sleeve should be positioned behind an Brick Vent and adjusted to suit the width of the cavity using a number of bricks and sleeves dependant on the ventilation required and thickness of the walls. The airflow passage should be free of any obstructions and surplus mortar. The Cavity Sleeve should be fitted to the back of an Brick Vent 9" x 3" and adjusted to fit the desired cavity width. It can be used in any combination required and built into the brick course as normal.



Product Code	Description	Box Qty
SOLCO/CAVITY/SLEEVE	Cavity Sleeve 50-100mm	10



### Technical

Colour: Grey

Box Qty: 10

Material: Polypropylene

Free Airflow: 6165mm<sup>2</sup>

