



# Actitex Bentonite Structural Waterproofing Solutions

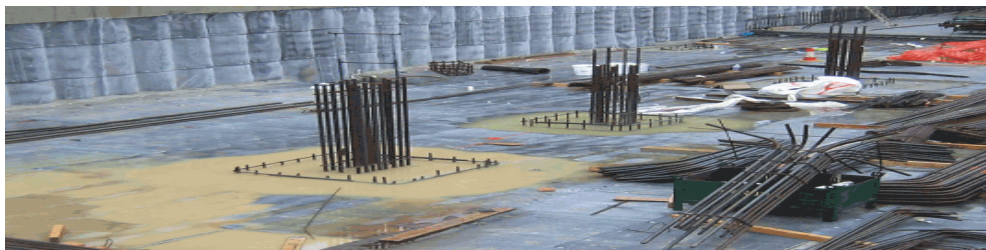
MANUFACTURE, DESIGN AND SUPPLY TO BS8102:2009.

Actitex Structural Waterproofing Solutions is manufactured worldwide. Actitex is a high performance active composite structural waterproofing system, certified to UK and International standards, providing bespoke waterproofing solutions, preventing water ingress into all elements of a structure.

Actitex is a bentonite waterproofing solution comprising high swelling sodium bentonite encapsulated between a non-woven and woven geotextile. A 'needle-punch' process interlocks the geotextiles together through the bentonite, forming an extremely strong composite that maintains a consistent layer of bentonite. When designing Type A structures (as classified in BS8102:2009), the product applied correctly, is capable of providing the levels of protection required for Grades 1, 2 & 3 basements.

## BENEFITS

- Proven technology: BDA Agrément®, CE Marked, NHBC & BRE Compliant.
- Conformity: To BS 8102: 2009 (Type A, all Grades)
- CSSW qualified - PCA Certificated Surveyors in Structural Waterproofing
- Full warranty and design PI available
- Cost-effective: Compared to traditional waterproofing methods (reduced detailing; ancillary products; installation time/labour costs)
- Durability: Can be installed in all weather conditions, has self-healing/sealing properties and has excellent peel-adhesion/self-bonding to concrete
- Easy Installation: Minimal preparation & no requirements for primers, adhesives, seam tapes, pre-formed section or protection boards
- Flexibility: Can be fixed to almost any background including rock and various piles
- project-specific technical advice, design guidance/technical drawings, on-site installation, tool box talks & site inspections.
- Full system warranty available
- Green System: Sodium Bentonite is a naturally occurring mineral.



## The full range of products includes:

### ActiTex

An active waterproofing membrane of high strength geotextiles encapsulating a sodium bentonite layer.

### ActiFill

a treated granular sodium bentonite used primarily as a detailing accessory product within waterproofing systems.

### ActiStop

is an active waterstop which reacts with water to seal construction joints within concrete.

### Acti200

is a cementitious, ready-mixed waterproofing impregnator.

### Acti300

is a highly elastic cementitious waterproof coating, consisting of aggregates, cement based binders and acrylic polymers.

### ActiAgrément®

BAB 17-060/01/A





## ActiTex

Is an active waterproofing membrane of high strength geotextiles encapsulating a sodium bentonite layer. Using a non-woven & woven geotextile which are needle punched together, to provide a robust and flexible delivery system, the layer of sodium bentonite is uniquely pre-confined within a strong, yet pliable membrane. ActiTex works by forming a low permeability membrane when in contact with water. Once wetted unconfined sodium bentonite can swell up to 15 times its dry volume. ActiTex is designed to allow small worms of sodium bentonite to pass through into the concrete sealing any small cracks caused by ground settlement, concrete shrinkage

## ActiStop

ActiStop is a high-swelling hydrophilic strip waterstop and is a formulated blend of sodium bentonite & butyl rubber. ActiStop is an active waterstop which reacts with water to seal construction joints within concrete. The seal resists hydrostatic pressure, stopping the passage of water through the joint.

## ActiFill

ActiFill is a treated granular sodium bentonite used primarily as a detailing accessory product within waterproofing systems. ActiFill can be used dry or pre-hydrated and in confinement will form a dense waterproof 'paste' to act as detailing compound.



### Typical Uses:

- Below ground structures wall & beneath slab
- Property line construction - secant, contiguous piles, steel sheet piling, permanent shuttering, stabilised earth retention walls, king post walls.
- Void formers, compacted ground, insulation, clay heave board, etc.
- Tunnels, earth covered roofs
- Structures under continuous or intermittent hydrostatic pressure.

### Typical Uses:

- Construction joints in in-situ reinforced concrete structures.
- New to existing concrete construction.
- Pipe penetrations – wall & floor.
- Irregular surfaces.
- Box out penetrations & remedial sections.

### TYPICAL USES

- Fill Material – to fill cavities or voids in the substrate prior to installing waterproofing membrane/system.
- Fillet Material – when hydrated to form a 'paste' around penetrations and horizontal/vertical junctions
- Buried Roof Layer – 3mm bed of ActiFill is applied to the top of tunnels or buried roof structures (minimum 1mtr below fully compacted well graded soil) prior to application of ActiTex (seek advise from manufacturer on this application)

